

MAX ETL = EXTRACT, TRANSFORM, LOAD

SPEEDING YOUR IMPORT EXPORT TASKS USING FAMILIAR TOOLS

ETL = Extract Transform Load

- ETL - Extracts MAX data in XML format
(XML = Extensible Mark Up Language an industry standard for data transfer over the internet)
- ETL - Transform MAX data using Excel
- ETL - Load MAX data in XML format

Transform Tools

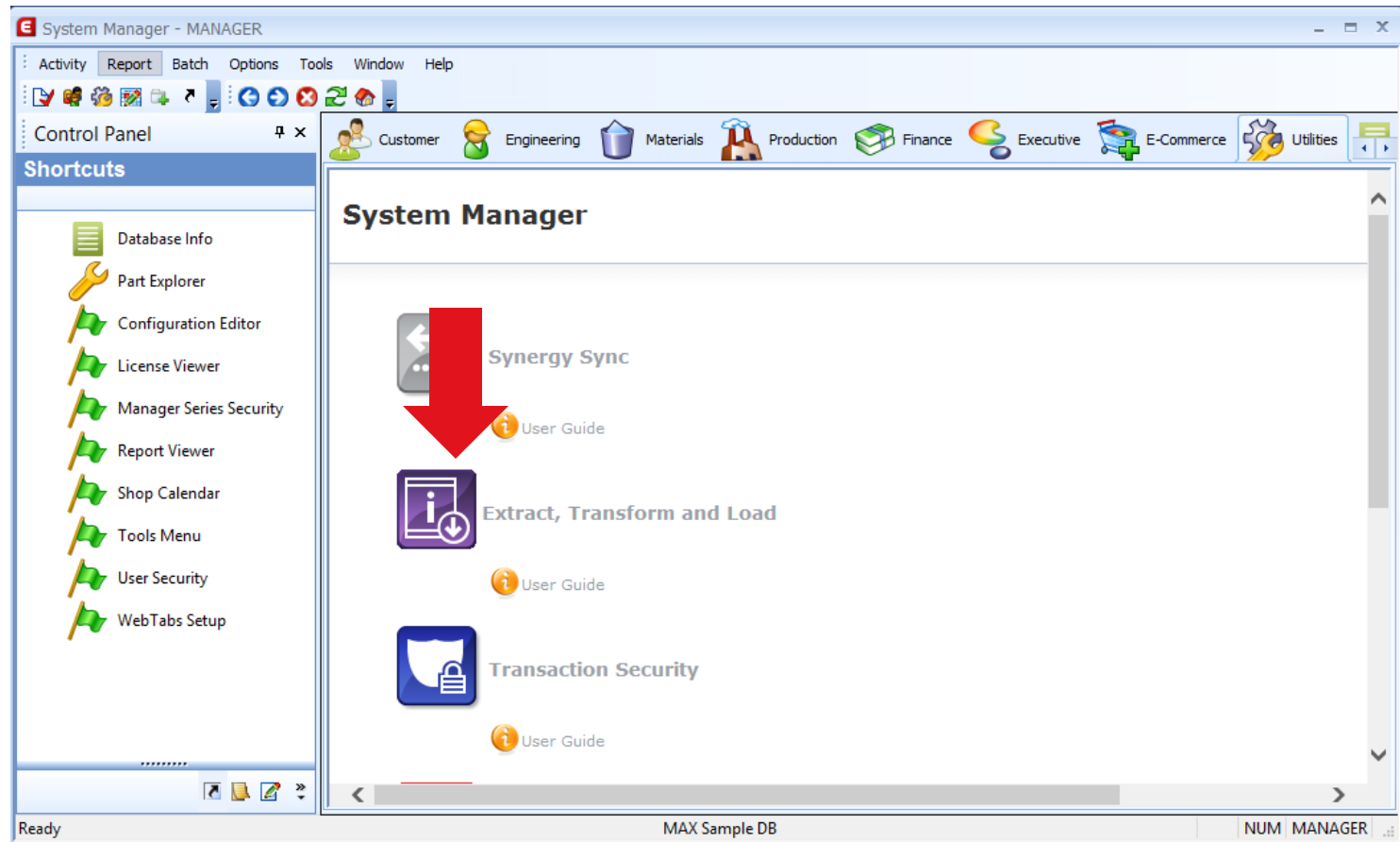
- Familiar Transform tool – Microsoft Excel
- Excel versions prior to 2003 will not work
- XML Spy home edition is currently free.
- XML Spy Used for sophisticated data transformation projects.

Concise Process Steps

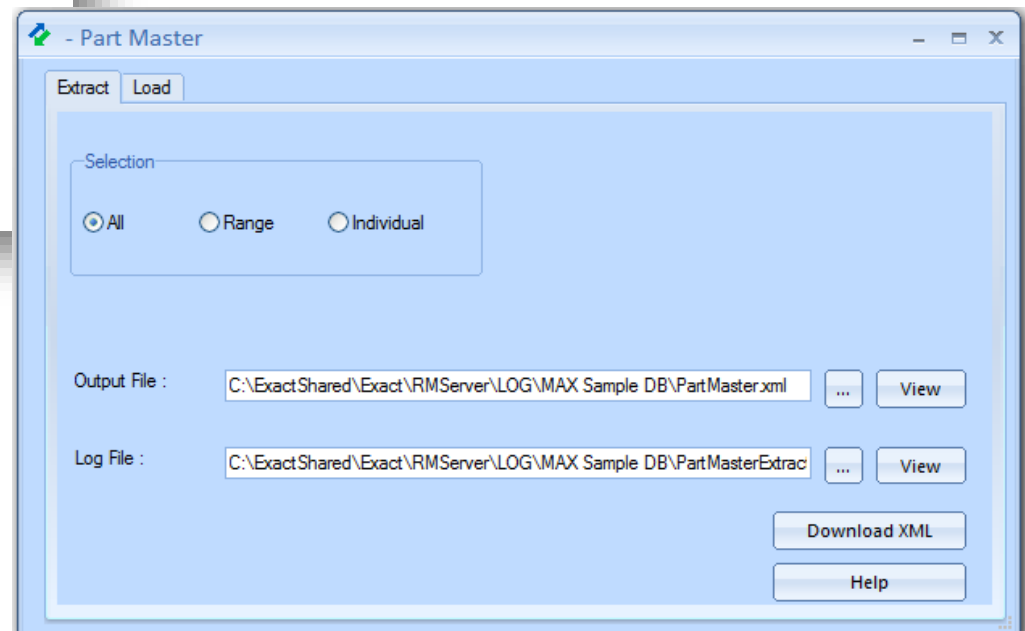
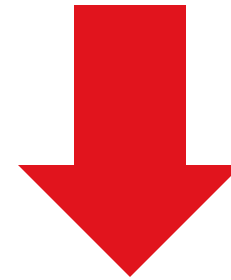
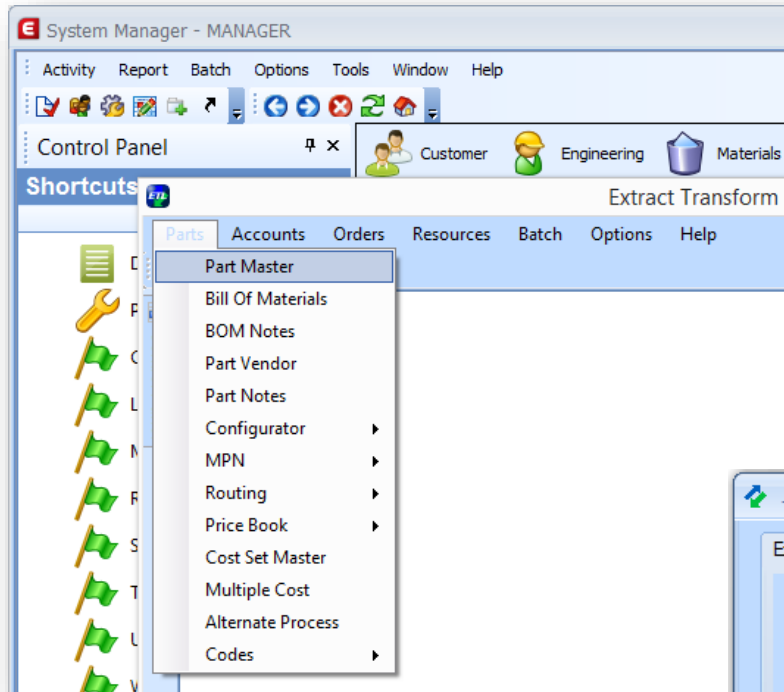
- Export Data using ETL Module in MAX
- Open the XML file in Excel
- Drag table from Schema to Sheet and Refresh Data
- Edit records to update or add records as needed
- Save Workbook as XML Data
- Load using ETL

1) Open ETL Module

- To Start, Open MAX and navigate to the Utilities Module and click Extract, Transform and Load

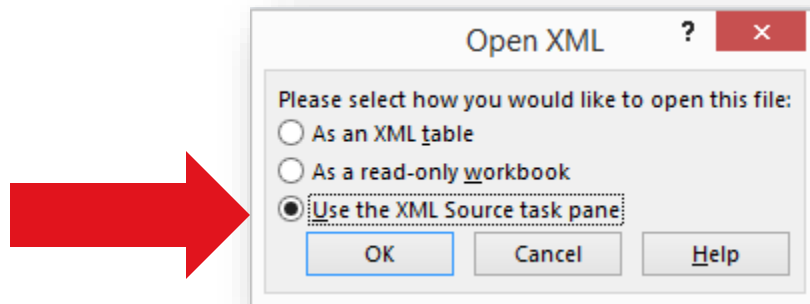


2) Select data to extract



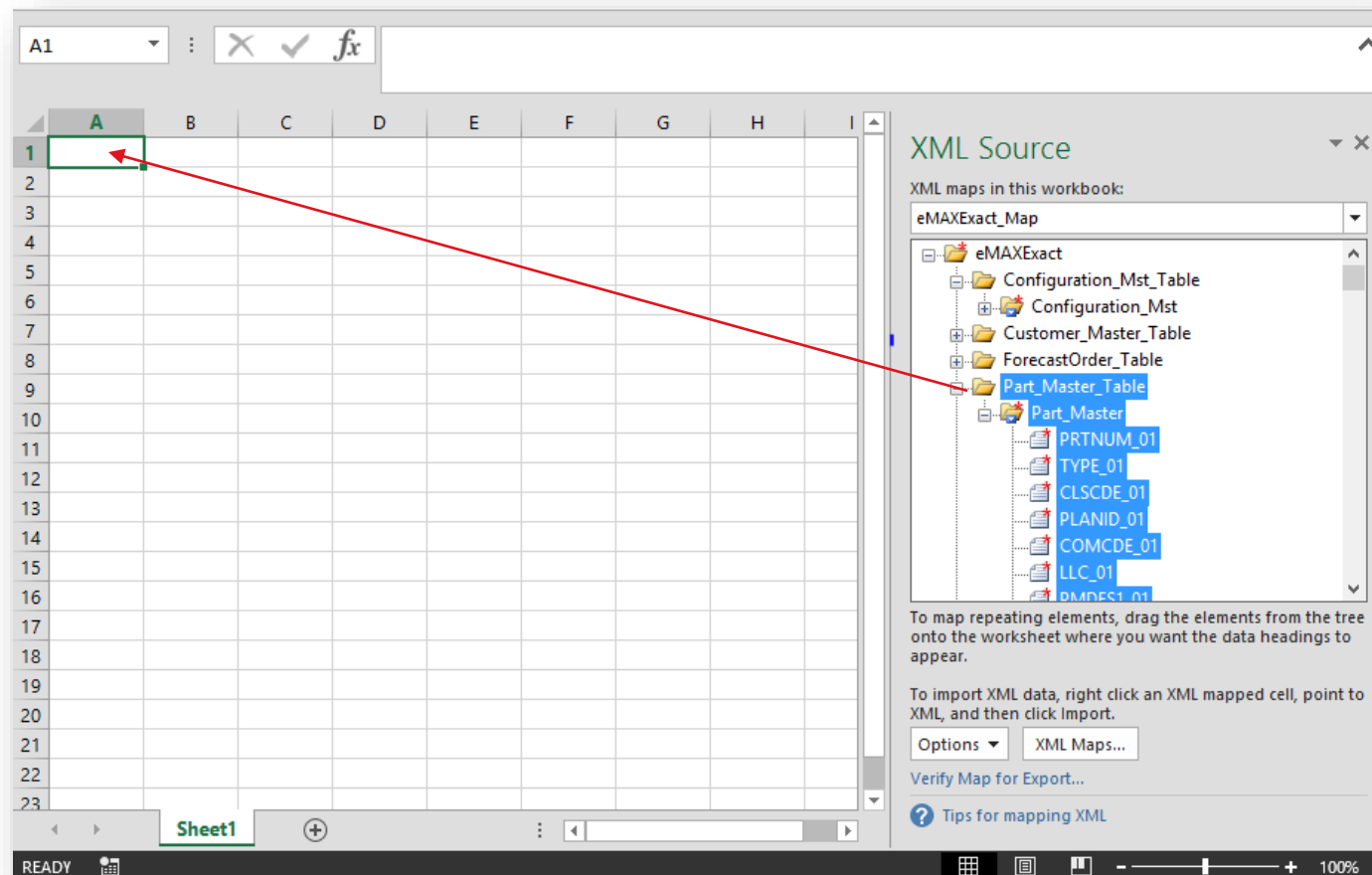
3) Open the XML File

- Using the ETL module, **extract** the MAX data
- Open the <filename>.xlsx file
- Select “Use the XML Source task pane.

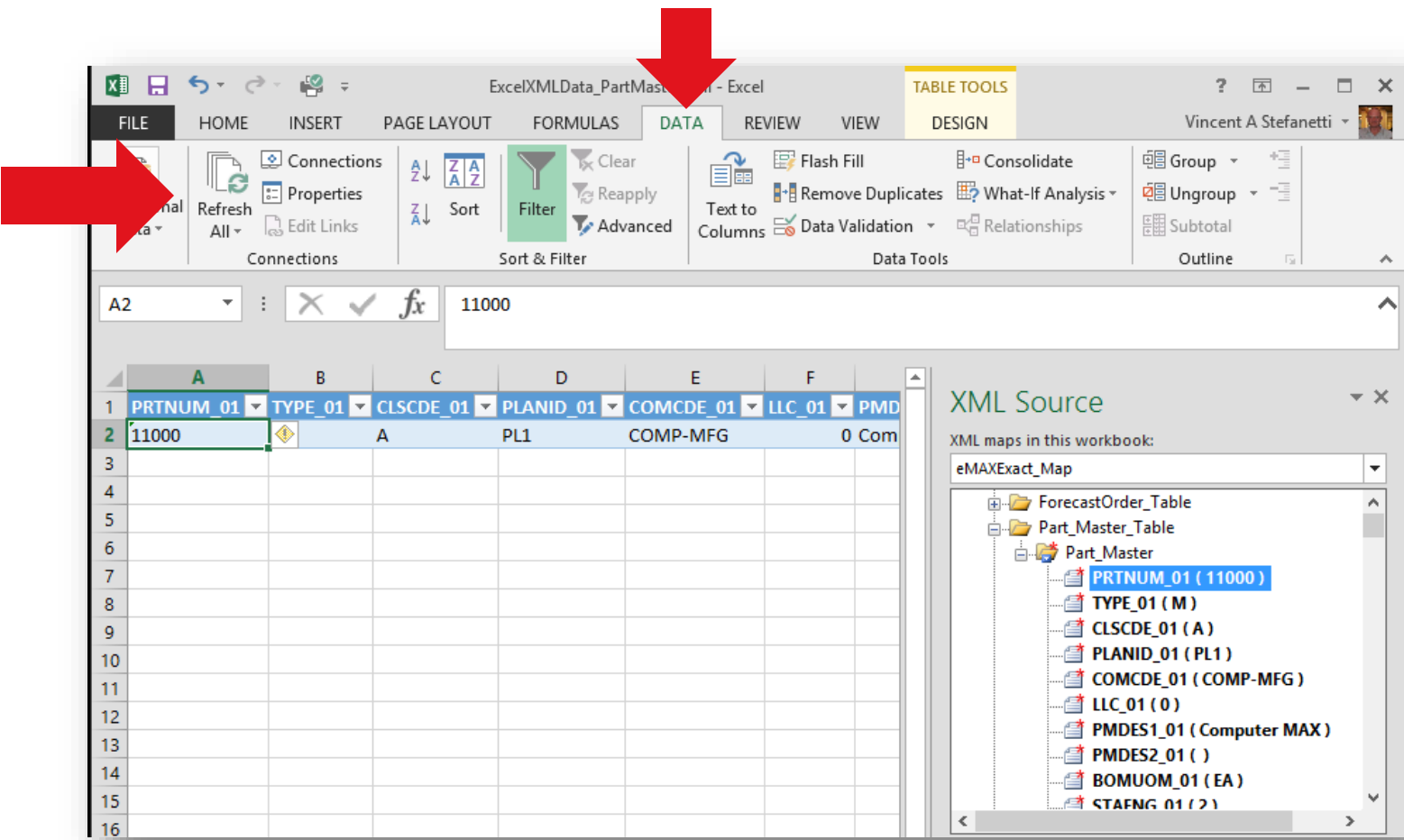


4) Edit XML data

- Using Excel drag the element on the right to Cell A1 at the top.

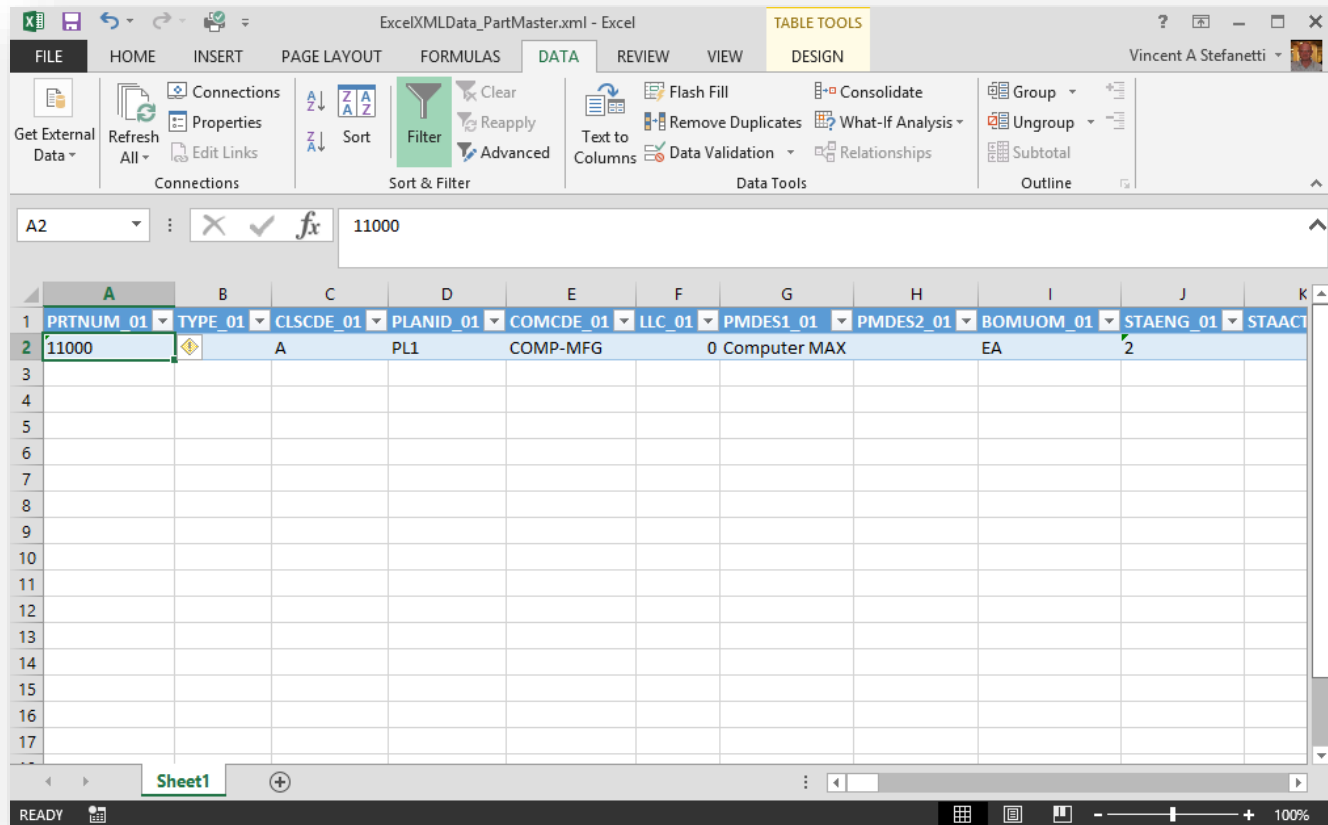


- Next Click the Data Tab then click Refresh All.

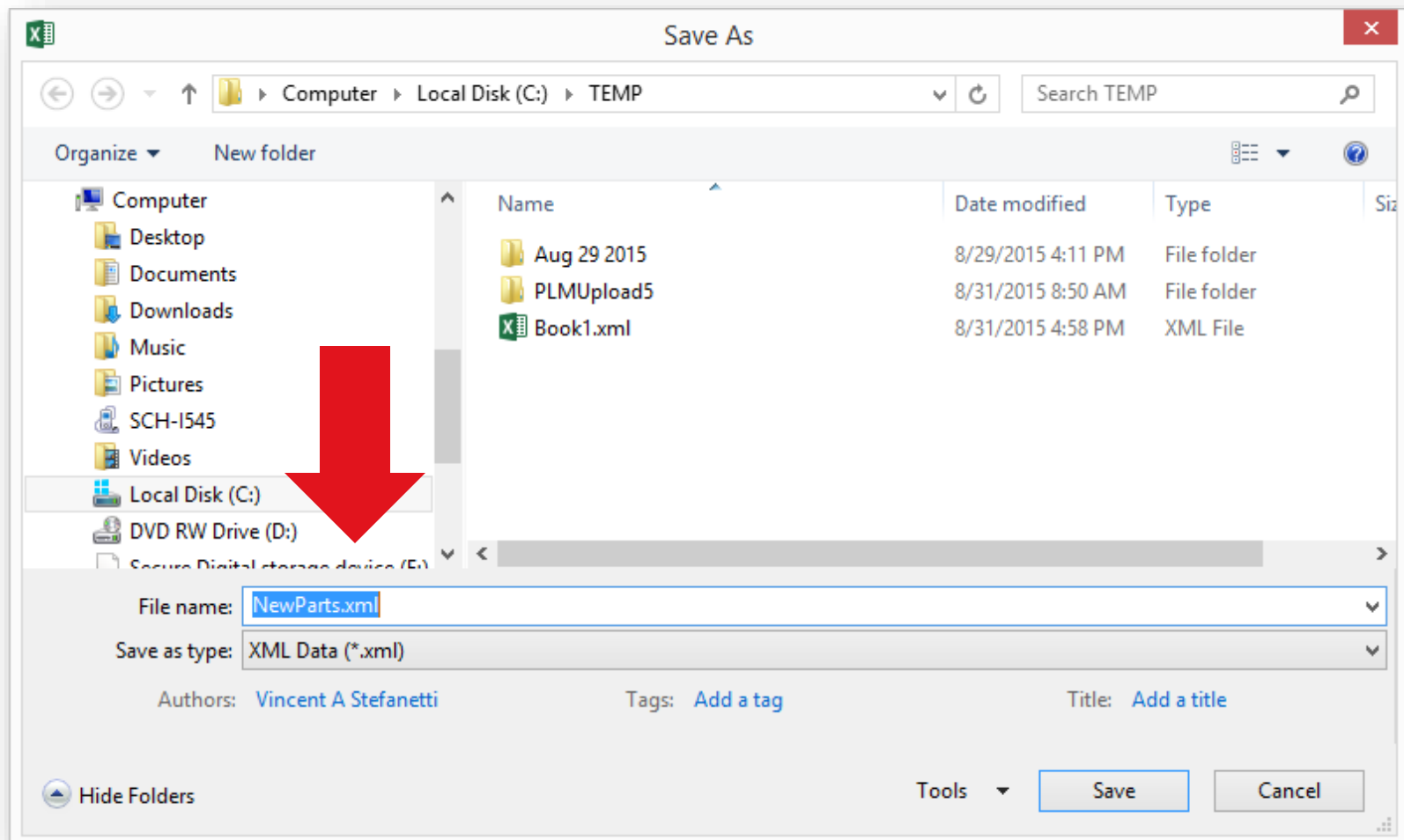


Edit XML Data

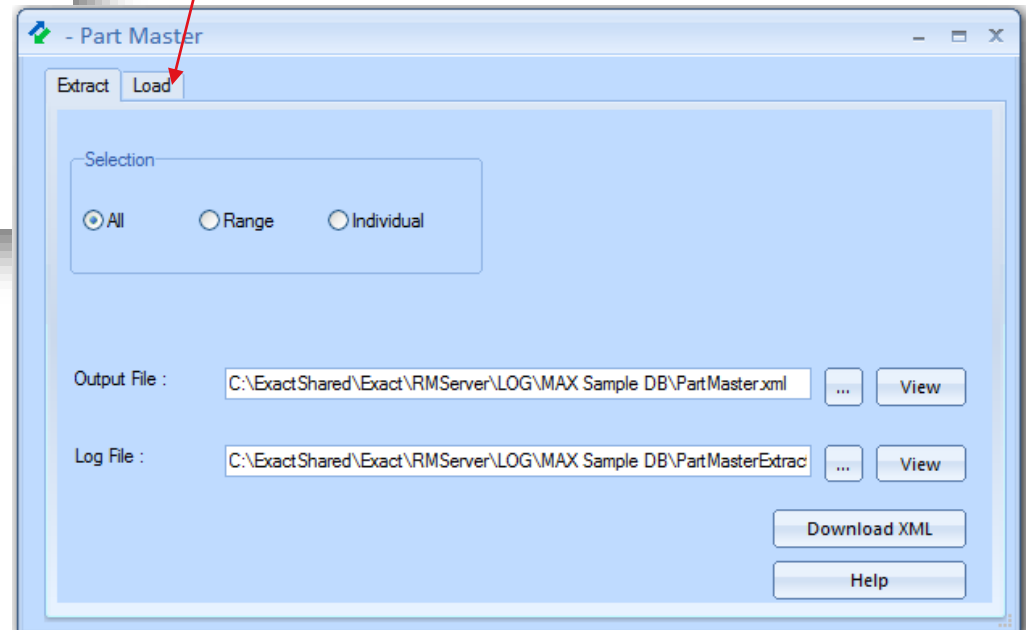
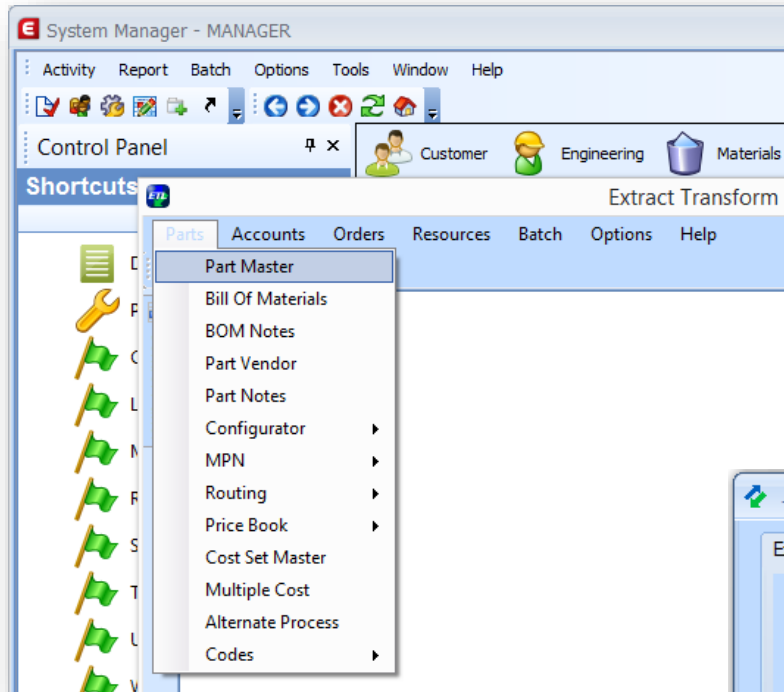
- Once the data has been refreshed you can edit fields and Ctrl-D to fill down columns with default values, add new records etc.



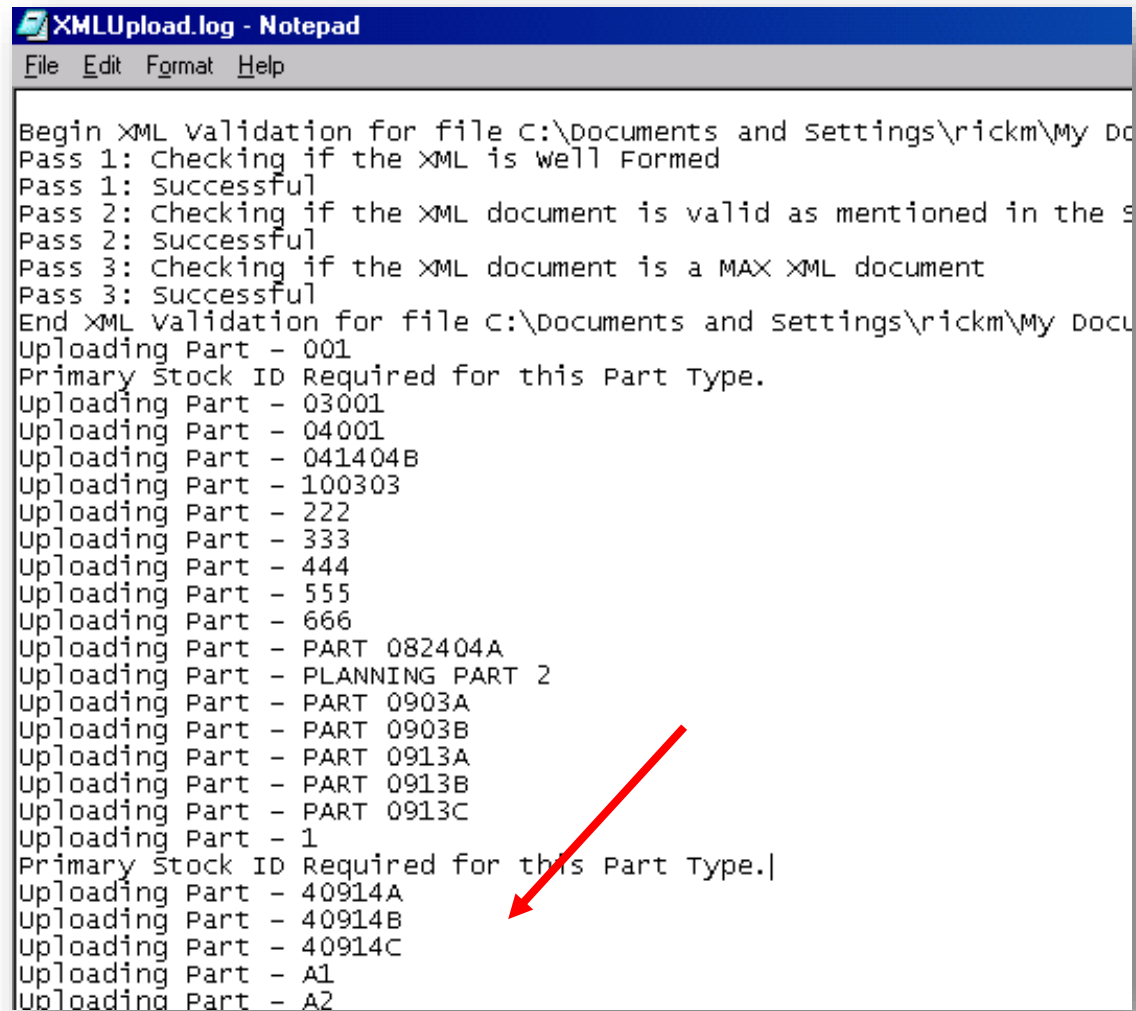
When editing is complete Save As – XML Data



2) Select data to load



Review the log to identify improperly formed records and need to be corrected.



```
XMLUpload.log - Notepad
File Edit Format Help

Begin XML Validation for file C:\Documents and Settings\rickm\My Do
Pass 1: Checking if the XML is well Formed
Pass 1: Successful
Pass 2: Checking if the XML document is valid as mentioned in the s
Pass 2: Successful
Pass 3: Checking if the XML document is a MAX XML document
Pass 3: Successful
End XML Validation for file C:\Documents and Settings\rickm\My Docu
Uploading Part - 001
Primary Stock ID Required for this Part Type.
Uploading Part - 03001
Uploading Part - 04001
Uploading Part - 041404B
Uploading Part - 100303
Uploading Part - 222
Uploading Part - 333
Uploading Part - 444
Uploading Part - 555
Uploading Part - 666
Uploading Part - PART 082404A
Uploading Part - PLANNING PART 2
Uploading Part - PART 0903A
Uploading Part - PART 0903B
Uploading Part - PART 0913A
Uploading Part - PART 0913B
Uploading Part - PART 0913C
Uploading Part - 1
Primary Stock ID Required for this Part Type.
Uploading Part - 40914A
Uploading Part - 40914B
Uploading Part - 40914C
Uploading Part - A1
Uploading Part - A2
```

FAQ's

- Can I upload **only** the records I modified?
- Yes, and this may greatly increase the load speed. Delete the unaffected records from the spreadsheet before saving it as an XML Data file.
- Will the “**dynamic**” fields in Max (e.g.: on-hand qty) update during the time after I have the extracted data and before I upload the changes?
- Yes, so to prevent overwriting those values, these cells in the spreadsheet must be blank.
- What if I wish to change a field's value to blank
- Enter a “ ” (space) in the cell in the spreadsheet.

FAQ's

- Do I really need Excel 2003?
- Yes. Earlier versions of Excel did not support XML file format.
- Do I really need XMLSpy?...
- If using a version of Max prior to batch 1900. The free home edition of XMLSpy is required to insert the MAXDataSchema.xsd after using Excel.
<http://link.altova.com>
- Is XML here to stay?
- Yes. Future versions of Microsoft Office offer XML for native file format.

FAQ's

- Can ETL error logs be automatically emailed?
- Yes. Set ETL module Options
- Is the latest ETL help on line?
- Yes. Set System Manager Options to Check Internet Connection. The help comes directly from technical authors. (By default help is a local PDF installed with the MAX Batch).

Disclaimer

- This document contains certain statements and expectations that are forward looking, and which are based on information and plans that are currently available. By their nature, such forward-looking statements and expectations generate risk and uncertainty because they concern factors and events in the future and depend on circumstances that may not occur.
- Unforeseen factors that could influence the statements and expectations may, for instance, be changes in expenditures by companies in the markets we operate in; economic, political and foreign exchange fluctuations; possible statutory changes; changes in salary levels of employees; or future takeovers and divestitures.
- Exact can therefore not guarantee the accuracy and completeness of such statements and expectations, nor that such statements and expectations will be realized. Actual results may differ materially. Exact refuses to accept any obligation to update statements made in this document.

**FOCUS ON
WHAT'S NEXT**

www.exact.com